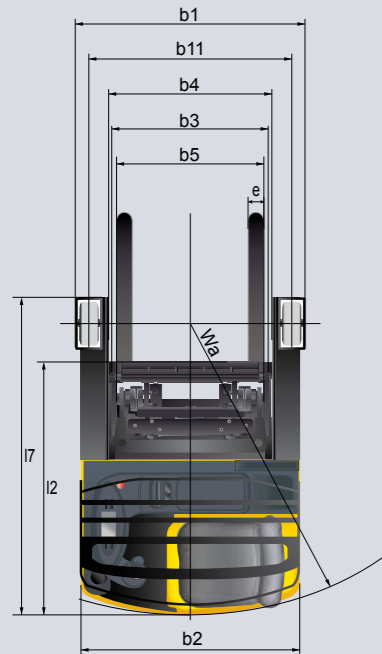
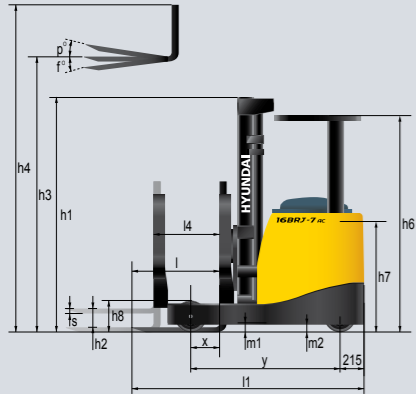


## Dimension



## Specification

### ■ Identification

1.1	Manufacturer	HYUNDAI	HYUNDAI	HYUNDAI	HYUNDAI	
1.2	Manufacturer's model designation	14BRJ-7	16BRJ-7	20BRJ-7	25BRJ-7	
1.3	Power supply(electric,diesel,petrol,gas>manual)	electric	electric	electric	electric	
1.4	Type of operation(hand,pedestrian,standing,seated,order-picker)	seated	seated	seated	seated	
1.5	Load capacity / rated load	Q (t)	1.4	1.6	2	2.5
1.6	Load center distance	c (mm)	600	600	600	600
1.8	Load distance, center of drive axle(Loadwheel) to fork	x (mm)	333	383	340	490
1.9	Wheelbase	y (mm)	1,410	1,406	1,520	1,670

### ■ Weights

2.1	Service weight (Incl. battery)	kg	2,946	3,048	3,515	3,711
2.3	Axle loading, reach in, unloaded front(drive)/rear(load)	kg	1,762/1,183	1,879/1,168	2,115/1,400	2,356/1,355
2.4	Axle loading, reach out, loaded front(drive)/rear(load)	kg	576/3,770	585/4,063	593/4,922	604/5,607
2.5	Axle loading, reach in, loaded front(drive)/rear(load)	kg	1,497/2,849	1,641/3,006	1,772/3,742	2,191/4,020

### ■ Wheels,Chassis

3.1	Tires(solid rubber, superelastic, pneumatic, polyurethane)	PE	PE	PE	PE	
3.2	Tires size, front-Drive-(Φ x width)	305x140	305x140	345x140	345x140	
3.3	Tires size, rear-Load-(Φ x width)	285x100	285x100	355x106	355x135	
3.5	Wheels, numbers(x=driven wheels), front(drive)/rear(load)	1x/2	1x/2	1x/2	1x/2	
3.7	Track width, rear(load)	b11 (mm)	1,149	1,149	1,155	1,184

### ■ Basic Dimensions

4.1	Mast/fork carriage tilt forward/backward	degrees	2/5	2/5	2/5	2/5
4.2	Lowered mast height	h1 (mm)	2,362	2,362	2,400	2,400
4.3	Free lift	h2 (mm)	1,739	1,739	1,709	1,709
4.4	Lift height	h3 (mm)	5,306	5,306	5,305	5,305
4.5	Extended mast height	h4 (mm)	5,812	5,812	5,996	5,996
4.7	Overhead load guard (cab) height	h6 (mm)	2,120	2,120	2,120	2,120
4.8	Seat height/ standing height	h7 (mm)	952	952	970	970
4.10	Height of wheel arms	h8 (mm)	253	253	271	271
4.19	Overall length (reach in, fork end)	l1 (mm)	2,192	2,192	2,445	2,445
4.20	Length to face of forks ( reach in)	l2 (mm)	1,292	1,292	1,395	1,395
4.21	Overall width	b1/b2 (mm)	1,279/1,270	1,279/1,270	1,291/1,270	1,349/1,270
4.22	Fork dimensions(hook type)	s/e/l (mm)	40x100x1,200	40x100x1,200	45x100x1,200	45x122x1,200
4.23	Fork carriage ISO 2328, class/type A,B		2B	2B	2B	2B
4.24	Fork-carriage width	b3 (mm)	948	948	948	948
4.25	Overall fork width	b5 (mm)	729	729	729	729
4.26	Distance between support arms	b4 (mm)	952	952	952	952
4.28	Reach Stroke	l4 (mm)	528	578	555	705
4.31	Ground clearance, loaded, under mast	m1 (mm)	105	105	123	123
4.32	Ground clearance, centre of wheelbase	m2 (mm)	75	75	93	93
4.33	Aisle width for pallets 1,000x1,200 crossways	Ast (mm)	2,722	2,736	2,827	2,872
4.34	Aisle width for pallets 800x1,200 lengthways	Ast (mm)	2,780	2,785	2,883	2,900
4.35	Turning radius	Wa (mm)	1,625	1,675	1,735	1,885
4.37	Length over load arms	l7 (mm)	1,810	1,860	1,980	2,130

### ■ Performance Data

5.1	Travel speed, unloaded	km/h	14	14	14	14
5.2	Lift speed, loaded/ unloaded	mm/s	370/580	370/580	300/470	300/470
5.3	Lowering speed, loaded/unloaded	mm/s	500/450	500/450	500/450	500/450
5.6	Max. drawbar pull, loaded/ unloaded S2.5min	Kgf	615/653	588/624	763/810	776/830
5.8	Max. gradient performance, loaded/ unloaded S2.5min	%	13/18	12/18	12/19	11/18
5.9	Acceleration time, loaded/ unloaded(10m)	S	5.0	5.1	5.3	5.5
5.10	Service brake		electric	electric	electric	electric

### ■ E-Motor

6.1	Drive motor rating S2.60min	kW	6.8	6.8	6.8	6.8
6.2	Lift motor rating at S2.5min	kW	15.8	15.8	15.8	15.8
6.3	Battery acc. to DIN 43531/ 35/ 36 A, B, C,no		DIN43531	DIN43531	DIN43531	DIN43531
6.4	Battery voltage, nominal capacity K5	V/Ah	48/420	48/420	48/560	48/560
6.5	Battery weight(min)	kg	750	750	940	940
	Battery dimensions L/W/H	mm	1,223/283/787	1,223/283/787	1,223/353/787	1,223/353/787

### ■ Other Details

8.1	Type of drive control		AC Mosfet	AC Mosfet	AC Mosfet	AC Mosfet
8.2	Operating pressure for attachments	bar	190	190	190	190
8.3	Oil volume for attachments(TF530)	l/min	25	25	25	25



\*Photo may include optional equipment.

FORKLIFT TRUCKS Environmentally - Friendly

# 14/16/20/25BRJ-7 AC

**HYUNDAI FORKLIFT**  
HEAVY INDUSTRIES CO.,LTD.

Head Office (Sales Office)  
14TH FL., HYUNDAI BLDG. 140-2, KYE-DONG, JONGNO-GU, SEOUL, KOREA 110-793  
TEL (82) (2) 746-4526, 4529 FAX (82) (2) 746-7444-7445

Americas Operation : Hyundai Construction Equipment Americas, Inc.  
955 ESTES AVENUE, ELK GROVE VILLAGE, IL. 60007, U.S.A. TEL (1) 847-437-3333 FAX (1) 847-437-3574

Europe Operation : Hyundai Heavy Industries Europe N.V.  
VOSSENDAAL 11, 2440 GEEL, BELGIUM TEL (32) 14-56-2200 FAX (32) 14-59-3405

PLEASE CONTACT

www.hyundai-ce.com

2010. 08 Rev 1.

**HYUNDAI**  
HEAVY INDUSTRIES CO.,LTD.

We build a better future



## Superior Power & Optimal Performance

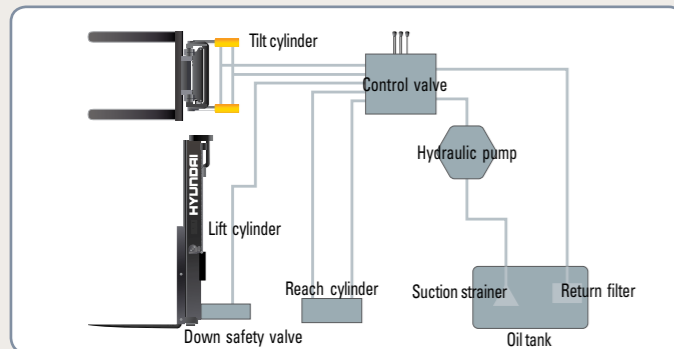
Smooth running, efficiently and ergonomically designed, 14/16/20/25BRJ-7 series are built to meet your needs.



### Excellent Gradeability Operation & Anti Roll Back

A powerful drive motor and four wheel configuration provide for exceptional stability and excellent gradeability. When restarting after stop on a slope, an anti-roll back function ensure operational safety.

\*Photo may include optional equipment.



### State-of-the-art Hydraulic System

The latest large-capacity hydraulic system reacts quickly during operation and the low noise control valve increases both efficiency and durability.



### Minimum turning radius

Compact design suitable for narrow aisle operation guarantees work efficiency and maximum space utilization.



\*Photo may include optional equipment.



### Automatic Center Position at Starting

When the key ON, prox switch detects the position of drive wheel, and the wheel turns to the center position automatically.



### FWD/REV Switch

The Forward/Reverse control provides the operator with precise and smooth directional control.



### Versatile Reach Stroke

Multi-roller reach assembly provides for a smooth, controlled and safe load handling system, extended reach allows unsurpassed versatility.



### Electro-Magnetic Brake

Increased brake torque and brake stability by electromagnetic load wheel brake.

### High Technology ZAPI Controller

The efficient, almost noiseless, 8Khz (high frequency) controller provides smooth quite operation and protection for low & high voltage, overheating and fault recording.

#### Energy Efficiency

- H(High) mode : 100%
- N(Normal) mode : 110%
- E(Economic) mode : 120%



### Drive Motor & Pump Motor

Efficient AC motor guarantees reliability and a optimized motor design provides for low noise levels. Temperature sensor ensure long motor life.





\*Photo may include optional equipment.

## Comfortable Operation

A design based on human engineering relieves fatigue and increases operator's efficiency.



### Newly Designed Steer Control Handle

A newly designed steering control coupled with our new Electric Power Steering control gives the operator exceptionally smooth and controlled steering for tight spaces.



### Proportional Fingertip Control

Minimal operator effort is required for precise, safe and productive control. The operator can control the machine very easily at fingertip.



### Camera & LCD monitor (Option)

A camera installed on fork side provides the operator with another excellent visibility. (apply to over TF700)



### New High Visibility for Safe Operation

The operator is able to work with increased safety and accuracy due to a wider mast view.



### Comfortable Operator Environment

A practically designed full suspension seat is fully adjustable for optimum operating position, reducing operating fatigue.

### Cup Holder, Console Box & Storage Space

Additional storage spaces are located inside the operating space for operator's convenience.



### Self - diagnostic LCD Monitor

The LCD monitor has a back-light system to provide a clear view of the system's operation in all environments. The monitor provides information about operation error, system fault, battery level, hour meter plus other various functions.



### Strong Overhead Guard

The safety overhead guard meets EEC and ANSI regulations and protects the operator during hazardous work.



### Headrest Cushion Pad

A large and soft cushion pad is positioned for operator's safety and comfort.



### Non Slip Floor Mat

A heavy, vibration dampening, non-slip floor mat reduces operator fatigue and allows for increased productivity.



### Break Pedal

Smoother braking is assured by the balanced design of the pedal and maintenance costs are lowered as the cover is easily replaceable.



# Durability, Easy Maintenance

An ideal arrangement of component parts ensures easy access and convenience for maintenance.



\*Photo may include optional equipment.

### Option

- UL
- Beacon lamp (Amber, Blue, Red)
- Safety switch-mast (Fork & Traction speed reduction over 3m height)
- Fork camera (Mast TF700 ~ TF1200)
- Cold storage

- Fork(mm)  
 14/16BRJ-7 : 900, 950, 1000, 1050, 1150, 1350, 1500, 1600  
 20/25BRJ-7 : 1000, 1050, 1350, 1500, 1650, 1800

### Mast Specification (14/16BRJ-7)

Mast Type	Maximum Fork Height	Overall Height (Lowered)	Overall Height (Lifted)		Free lift Height		Tilt Angle		Truck Weight (Unloaded)	
			With Load Backrest	Without Load Backrest	With Load Backrest	Without Load Backrest	Fwd	Bwd	14BRJ-7	16BRJ-7
			14/16BRJ-7	14/16BRJ-7	14/16BRJ-7	14/16BRJ-7	14/16BRJ-7	14/16BRJ-7	kg	kg
	mm	mm	mm	mm	mm	mm	deg	deg		
TF430	4,335	2,023	5,369	4,841	989	1,395	2	5	2,873	2,975
TF470	4,735	2,173	5,769	5,241	1,139	1,545	2	5	2,904	3,006
*TF530	5,306	2,362	6,335	5,812	1,333	1,739	2	5	2,946	3,048
TF570	5,701	2,495	6,735	6,207	1,461	1,867	2	5	2,974	3,076
TF630	6,301	2,720	7,335	6,807	1,686	2,092	2	5	3,021	3,123
TF670	6,701	2,853	7,735	7,207	1,819	2,225	2	5	3,099	3,201
TF700	7,001	2,953	8,035	7,507	1,919	2,325	2	5	3,121	3,223
TF750	7,501	3,120	8,535	8,007	2,086	2,492	2	5	3,157	3,259
TF800	8,001	3,320	9,035	8,507	2,286	2,692	2	5	3,198	3,300
TF850	8,501	3,487	9,535	9,007	2,453	2,859	2	5	3,282	3,384
TF900	9,001	3,654	10,035	9,507	2,620	3,026	2	5	3,319	3,421
TF950	9,501	3,821	10,535	10,007	2,787	3,193	2	5	3,355	3,457
TF1000	10,001	4,021	11,035	10,507	2,987	3,393	2	5	3,396	3,498
TF1050	10,501	4,188	11,535	11,007	3,169	3,575	2	5	3,421	3,523

### Mast Specification (20/25BRJ-7)

Mast Type	Maximum Fork Height	Overall Height (Lowered)	Overall Height (Lifted)		Free lift Height		Tilt Angle		Truck Weight (Unloaded)	
			With Load Backrest	Without Load Backrest	With Load Backrest	Without Load Backrest	Fwd	Bwd	20BRJ-7	25BRJ-7
			20/25BRJ-7	20/25BRJ-7	20/25BRJ-7	20/25BRJ-7	20/25BRJ-7	20/25BRJ-7	kg	kg
	mm	mm	mm	mm	mm	mm	deg	deg		
TF430	4,305	2,050	5,406	4,996	949	1,359	2	5	3,437	3,633
TF470	4,705	2,200	5,806	5,396	1,099	1,509	2	5	3,470	3,667
*TF530	5,305	2,400	6,406	5,996	1,299	1,709	2	5	3,514	3,711
TF570	5,705	2,533	6,806	6,396	1,432	1,842	2	5	3,545	3,741
TF630	6,305	2,758	7,406	6,996	1,657	2,067	2	5	3,653	3,850
TF670	6,705	2,891	7,806	7,396	1,790	2,200	2	5	3,696	3,893
TF700	7,005	2,991	8,106	7,696	1,890	2,300	2	5	3,718	3,915
TF750	7,505	3,158	8,606	8,196	2,057	2,467	2	5	3,756	3,953
TF800	8,005	3,350	9,106	8,696	2,249	2,659	2	5	3,806	4,002
TF850	8,507	3,517	9,608	9,198	2,416	2,826	2	5	3,914	4,111
TF900	9,007	3,684	10,108	9,698	2,583	2,993	2	5	3,952	4,149
TF950	9,509	3,851	10,610	10,200	2,750	3,160	2	5	3,990	4,186
TF1000	10,007	4,043	11,108	10,698	2,942	3,352	2	5	4,033	4,230
TF1050	10,507	4,210	11,608	11,198	3,109	3,519	2	5	4,071	4,268
TF1100	11,007	4,377	12,108	11,698	3,276	3,686	2	5	4,109	4,306
TF1150	11,507	4,569	12,608	12,198	3,468	3,878	2	5	4,152	4,349
TF1200	12,007	4,736	13,108	12,698	3,635	4,045	2	5	4,190	4,387

\* STANDARD

### Load Capacity

